

CHAMBER
HEALTH CASH PLAN

WESTFIELD

[RECAP OF COVER]

QUICK REMINDER ABOUT HOW THE CASHPLAN
WORKS AND WHAT YOU CAN CLAIM



ALL STAFF ELIGIBLE
AFTER 3 MONTHS
SERVICE



YOU CAN UPGRADE & OR
OPT IN PARTNERS AND
KIDS

COMPANY CONTRIBUTIONS

STAFF ELIGIBLE FOR LEVEL 2 COVER



OPTICAL

Up to £105



DENTAL

Up to £105



DENTAL
TRAUMA

Up to £210



THERAPY/
TREATMENTS

Up to £250



CONSULTATION

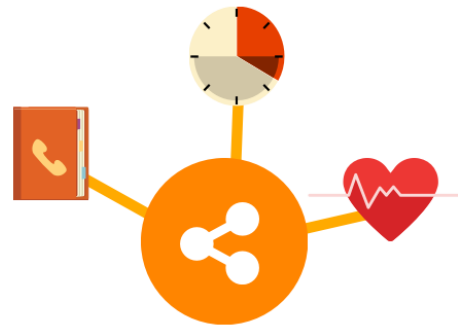
Up to £400

HEALTH & WELLBEING

MRI, CT & PET Scanning Facilities



Doctorline & Best Doctors -
for policyholder and their
family



- * 24 hour counselling and advice
- * Face to Face counselling
- * Personal health risk assessment
- * Healthclub concessions



HOW TO MAKE A CLAIM

Simply fill in the 1 page claim form and submit with your receipt
Yes - It is that simple!
<http://www.westfieldhealth.com/pdfs/claimforms/latest/claimform-chamber.pdf>

MORE:

<https://www.westfieldhealth.com/business/chamber-primary-health-plan>