



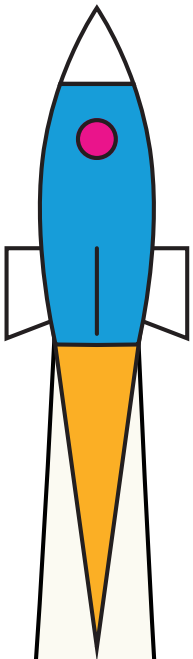
Swimming
with the big fish
SME MATCHMAKER SERVICE

Helping high-performing SMEs to secure high value,
long-term framework contracts on major projects



QUARTERLY CONNECT

HERE'S YOUR EXCLUSIVE INVITE TO OUR FIRST QUARTERLY CONNECT.



This meeting is a golden opportunity to take part in a practical, open and honest forum with influential decision makers from Programme and Project Partners (PPP), its confirmed Key Delivery Partners and fellow high-performing SMEs to discuss pipeline projects and requirements.

We have a limited number of delegate places and anticipate that demand will be high, so please RSVP as soon as possible.

Monday, July 25 - 10.30am arrival for 11.00am to 1.00pm
(followed by networking lunch)

**Solomons Europe, Papcastle Depot, Papcastle Road,
Great Broughton, Cockermouth CA13 0LD**

RSVP: Hazel Duhy at hazel.duhy@solomonseurope.co.uk