



**Swimming**  
with the big fish  
SME MATCHMAKER SERVICE

Helping high-performing SMEs to secure high value,  
long-term framework contracts on major projects



QUARTERLY CONNECT

# QUARTERLY CONNECT 2

## CAN YOU AFFORD NOT TO BE THERE?

As we all know in business, there's no substitute for face-to-face communication. That's why we're taking our second Quarterly Connect meeting to the next level. You'll have an invaluable chance to sit down and discuss opportunities directly with Programme and Project Partners' appointed Key Delivery Partners. They are:

### **Balfour Beatty Kilpatrick**

KDP3 Heating, Ventilation and Air Conditioning (HVAC)  
KDP4 Electrical and Instrumentation  
KDP5 Mechanical Pipework

### **EJ Parker Technical Services**

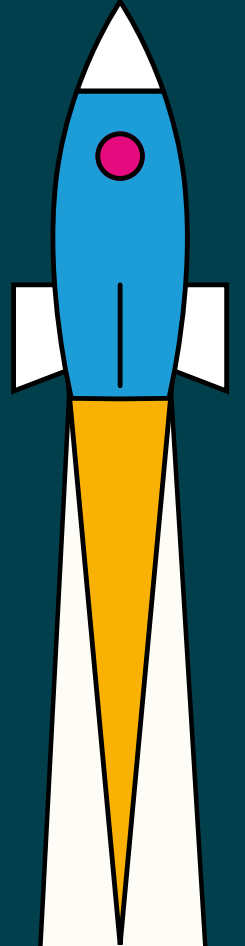
KDP3 Heating, Ventilation and Air Conditioning (HVAC)

### **NG Bailey**

KDP4 Electrical and Instrumentation

### **Doosan Babcock**

KDP5 Mechanical Pipework



This invitation is unique to your business as you've been identified as an SME that provides a relevant service or product to support one or more of the above work packages.

So, don't delay as spaces are limited and we are only able to accommodate one person per SME. Please RSVP as soon as possible with Hazel Duhy at [hazel.duhy@solomonseurope.co.uk](mailto:hazel.duhy@solomonseurope.co.uk)



**Tuesday, November 1 - 9.30am arrival for 10.00am to 1.00pm**  
(followed by networking lunch)



**Solomons Europe, Papcastle Depot, Papcastle Road,  
Great Broughton, Cockermouth CA13 0LD**