



Swimming
with the big fish
SME MATCHMAKER SERVICE

Helping high-performing SMEs to secure high value,
long-term framework contracts on major projects



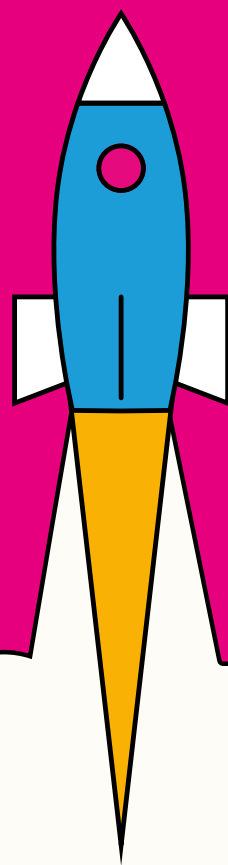
QUARTERLY CONNECT

HERE'S YOUR EXCLUSIVE INVITE TO **QUARTERLY CONNECT 3** FOCUSED ON KDP8 AND KDP9

Further to our recent save the date message, here's your exclusive invite to Quarterly Connect 3. As outlined, this will focus on the KDP8 Concrete Structures, Groundworks and Blockwork and KDP9 Building Fit-out.

The meeting will include an overview of the packages and the opportunities to get involved. There will be short breakout sessions offering relevant SMEs the chance to speak directly to key decision makers at Sir Robert McAlpine and Seddon.

Finally, there will also be progress updates from the Matchmaker Service and Programme and Project Partners.



Space will be at a premium, so we are only able to accommodate one person per SME that has currently expressed an interest in supporting KDP8 or KDP9. Bookings will be taken on a first come, first served basis.

Please RSVP as soon as possible and book a break out session slot with Hazel Duhy at hazel.duhy@solomonseurope.co.uk



Thursday, March 30th 2023 – 9.00am arrival for 09.30am start
(the event to run until approximately 2.30pm and includes a networking lunch)



**Papcastle Depot, Papcastle Road, Great Broughton,
Cockermouth CA13 0LD**